

# EXSYS 308

EPL<sup>®</sup> EXCIMER PULSED LIGHT FOR PSORIASIS  
AND VITILIGO



PORTABLE. PROFITABLE. DURABLE.

TECHNOLOGY “MADE IN GERMANY”



SMART. SMALL. STRONG.

# OFFERING A NUMBER OF UNIQUE FEATURES

## 1 POWERFUL AND FAST

Twice as fast as comparable devices\*

Typical treatment times:

- 1–3 sec for a vitiligo lesion
- 2–7 sec for a psoriasis lesion

## 2 PRECISE

Light is delivered to the lesions by using glass adapters

Advantage: Superior visibility of the treatment area

## 3 VERSATILE

Treat multiple dermatologic indications with one device (e.g. psoriasis, vitiligo, atopic dermatitis)

Additional aesthetic indications (e.g. striae)

Optional adapter for intra-oral treatments (e.g. lichen planus)



## 4 COST EFFECTIVE

Durable technology

No consumables

Billing codes in most cases comparable with excimer laser \*\*

## 5 COMPACT DESIGN

30 cm x 30 cm x 25 cm

Fully transportable



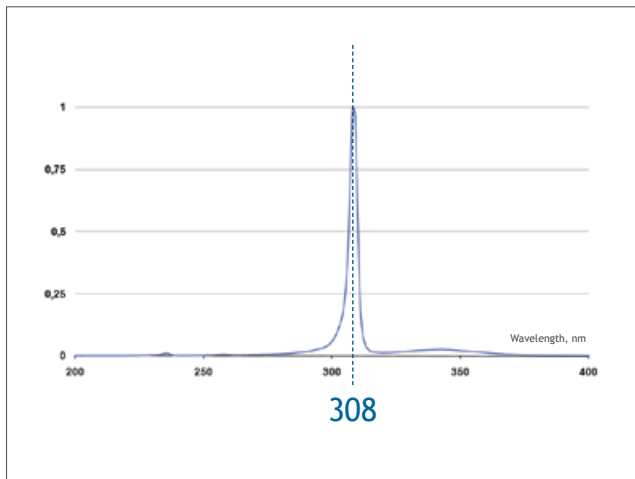
\* 100 mW/cm<sup>2</sup> version

\*\* depending on national regulations

# MONOCHROMATIC, POWERFUL AND TARGETED

## Monochromatic

Excimer systems have the same emission spectrum as excimer lasers: monochromatic UVB light at 308 nm.



Many clinical trials have proven that they provide the outcomes you expect with excimer lasers, at a fraction of the costs.

## Powerful

GME has developed the EPL® Excimer Pulsed Light technology.

The EPL® ExSys 308 is twice as powerful\* as most excimer lamps.

Its treatment speed is similar to excimer lasers.

## Targeted

Targeted phototherapy is more effective than conventional UVB treatment:

- high (super-erythemogenic) doses of energy can be applied  
→ enhancing efficacy and achieving faster response
- Exposure to affected areas only  
→ minimizing side effects

\* 100 mW/cm<sup>2</sup> version

# INDICATIONS

## PSORIASIS:

before



after 4<sup>th</sup>  
session

## VITILIGO:

before



after 20<sup>th</sup>  
session

## ATOPIC DERMATITIS:

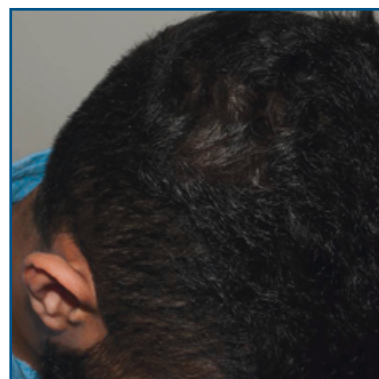
before



after 2<sup>nd</sup>  
session

## ALOPECIA AREATA:

before



after 17<sup>th</sup>  
session

# TECHNICAL INFORMATION

## SPECIFICATIONS

Light source	EPL® Excimer Pulsed Light
Wavelength	308 nm
Max. dose	6,000 mJ/cm <sup>2</sup>
Power density	50 or 100 mW/cm <sup>2</sup> depending on version
Max. treatment area	17.5 cm <sup>2</sup> (50 mm x 35 mm)
Pulse duration	1 sec – 120 sec
Dimensions (h x l x d)	25 cm x 30 cm x 30 cm
Weight	12 kg
Indications	Vitiligo Psoriasis Alopecia Areata* Atopic Dermatitis* Mycosis Fungoides* Lichen Planus*

\* Not approved in the US.

## PORTABLE. PROFITABLE. DURABLE.

Very low operating costs

No consumables or disposables

Durable light source

No restriction on treatment volume  
during warranty period



Albert-Rupp-Strasse 2  
91052 Erlangen  
Germany

Phone: +49 9131 934 1590

Homepage: [www.gmeonline.de](http://www.gmeonline.de)  
E-mail: [info@gmeonline.de](mailto:info@gmeonline.de)

